

Attenuation Pond 1 - Operation Phase
 Design return period: 30 years
 Footprint: 1177m²
 Depth: 1.6m including 300mm of freeboard
 Volume: 1493.54m³ including 300mm of freeboard

LEGEND:

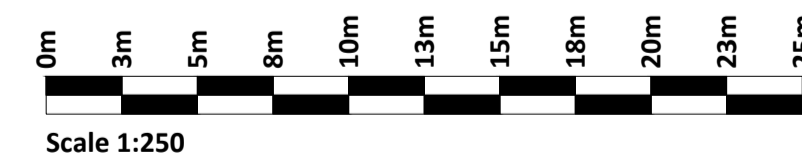
- PROPOSED DEVELOPMENT BOUNDARY
- PROPERTY BOUNDARY
- BATTERY STORAGE UNIT
- ACCESS TRACK
- HARDSTANDING SURFACE
- EARTHWORKS - CUTTING
- EARTHWORKS - FILL
- SECURITY FENCE
- ✕ SCREEN PLANTING
- WATER CONNECTION
- BURIED ELECTRICAL CABLE
- EXISTING BURDENWAY/LEAVE
- SOUND REFLECTIVE BARRIER
- ✕ FINISHED SURFACE LEVEL
- EXISTING GROUND CONTOUR - MAJOR
- EXISTING GROUND CONTOUR - MINOR
- LIGHTING POLE
- ✕ SITE NOTICE LOCATIONS

DRAINAGE LEGEND:

- CARRIER DRAIN
- FILTER DRAIN
- INTERCEPTOR DRAIN
- CROSS DRAIN
- MANHOLE
- ┌ HEADWALL
- ▶ FLOW ARROW
- ⊙ PUMP STATION
- ▭ SETTLEMENT POND
- ✕ DIFFUSE OUTFALL

PLAN

Scale 1:250



If Applicable : Ordnance Survey Ireland Licence No. CYAL50221678 © Ordnance Survey Ireland and Government of Ireland



No part of this document may be reproduced or transmitted in any form or stored in any retrieval system of any nature without the written permission of Fehily Timoney & Company as copyright holder except as agreed for use on the project for which the document was originally issued. Do not scale. Use figured dimensions only. If in doubt - Ask!

Rev.	Description	App By	Date
P01	FOR PLANNING	JH	19.09.24

PROJECT		CLIENT		
BALLYNAHONE LONG DURATION ENERGY STORAGE		FUTUREENERGY IRELAND DEVELOPMENT DAC		
SHEET		Date	Project number	Scale (@ A1)
SURFACE WATER ATTENUATION POND DETAIL		19.09.24	P23-117	1:250
		Drawn by	Drawing Number	Rev
		POR	P23-117-0501-0009	P01
		Checked by		
		TB		

O:\ACAD\2023\P23-117\P23-117-0501-0009

20 September 2024